

INTRODUCING

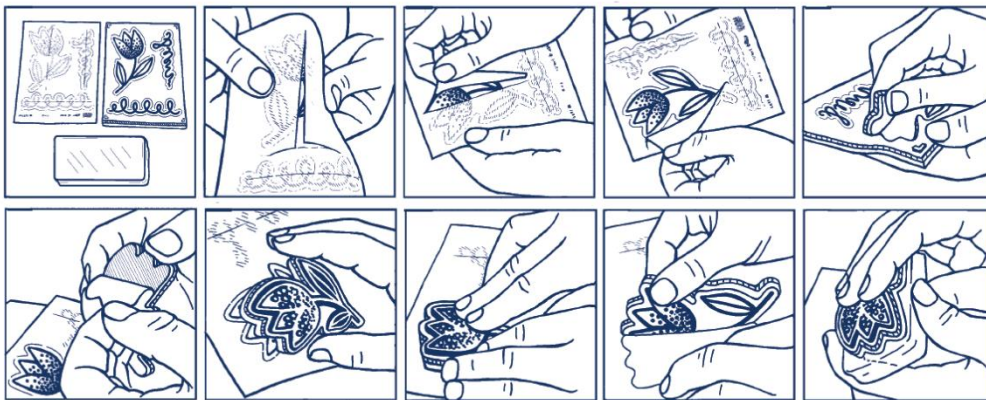
CLING STAMPS



Stampin' Up!'s red rubber stamps are now better than ever! The same quality rubber material you've always loved now comes with an adhesive image label that will cling like crazy to clear blocks (AC p. 206) or Stamparatus plates (AC p. 207) every time you use them.

HOW TO ASSEMBLE YOUR STAMPS

Note: Once you place the label on the stamp, it is adhered **permanently**. Attempting to remove or adjust the label will damage the stamp's foam.



- Remove the paper backing from the label.
- Remove your selected stamp from the rubber sheet and remove the paper backing from the stamp.
- Line up the foam side of the stamp with the image label, then press it evenly to adhere it to the label. **Make sure it is correctly positioned before you adhere it to the stamp.**
- Remove the stamp and label from the label sheet.
- Place the stamp on an acrylic block to begin stamping.

BEST PRACTICES

To remove the stamp from the block, grasp securely near the image label and remove slowly. (Cling stamps stick so well, if not carefully removed from the block, the foam can tear.)
To clean the labels, simply rinse under running water. Avoid alcohol-based cleaners.

TO LEARN MORE, CONTACT YOUR DEMONSTRATOR OR VISIT STAMPINUP.COM

CONTACT INFORMATION

Kristine McNickle | Independent Stampin' Up!® Demonstrator
www.creativestamping.co.nz

07 846 6974 | 021 253 1451 | kristine@creativestamping.co.nz

