

CREATIVE ELEMENTS DESKTOP CALENDAR



RECIPE

Stamps:

Creative Elements (wood: 124956, clear: 122647)

Card/Paper:

Early Espresso (121686) and Not Quite Navy (106577) cut as per template

Not Quite Navy (106577) cut at 5.5 cm x 7 cm

Not Quite Navy (106577) cut at 7 cm x 7 cm

Confetti White (106557) cut at 6 cm x 6 cm

Cherry Cobbler (121681) for punching four-petal flowers

Ink:

Early Espresso Classic Stampin' Pad (119670)

Cherry Cobbler Classic Stampin' Pad (119669)

Accessories:

Not Quite Navy Stampin' Write Marker (100059) and Color Spritzer Tool (107066)

Champagne Mist Shimmer Paint (116806)

Antique Brads (117273)

Pearls Basic Jewels (119247)

Tools:

Itty Bitty Four-Petal Flower Punch (Itty Bitty Shapes Punch Pack: 118309)

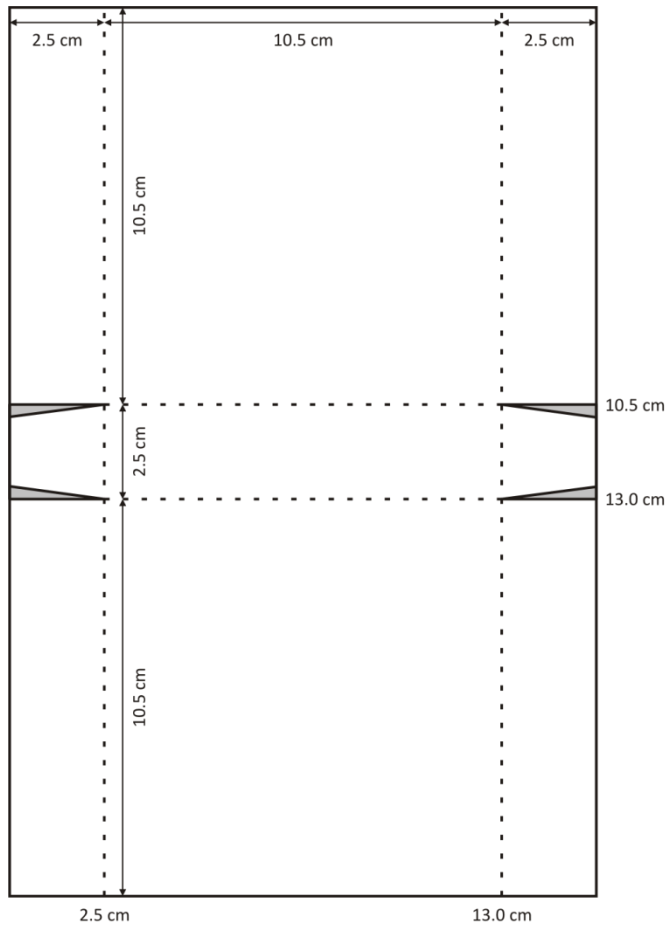
Paper Cutter (106583)

Sponge Daubers (102892)

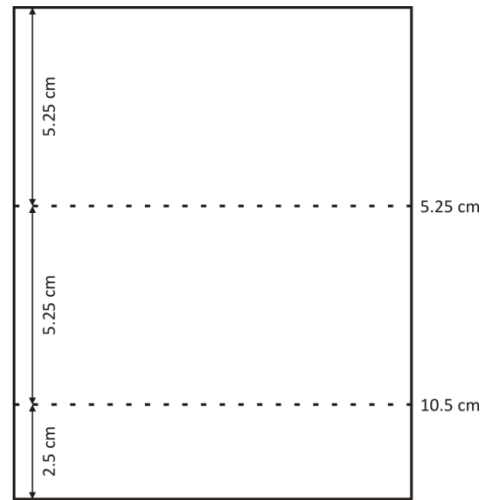
Mini Glue Dots (103683)

Stampin' Dimensionals (104430)

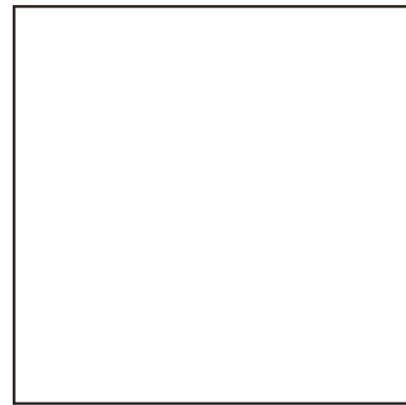
Early Espresso: 23.5 cm x 15.5 cm



Early Espresso: 13.0 cm x 10.5 cm



Early Espresso: 10.5 cm x 10.5 cm



Not Quite Navy: 14.9 cm x 14.9 cm

